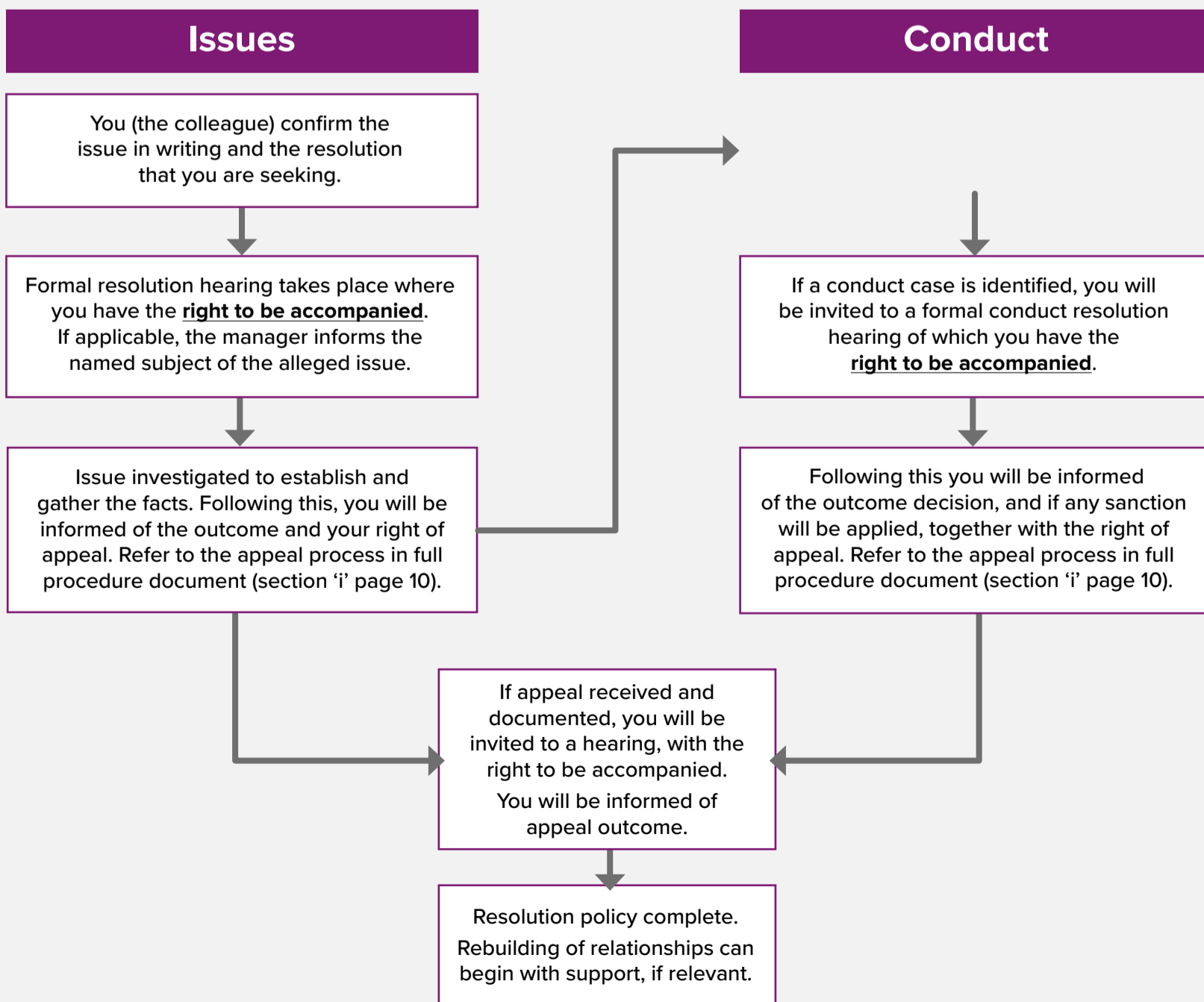
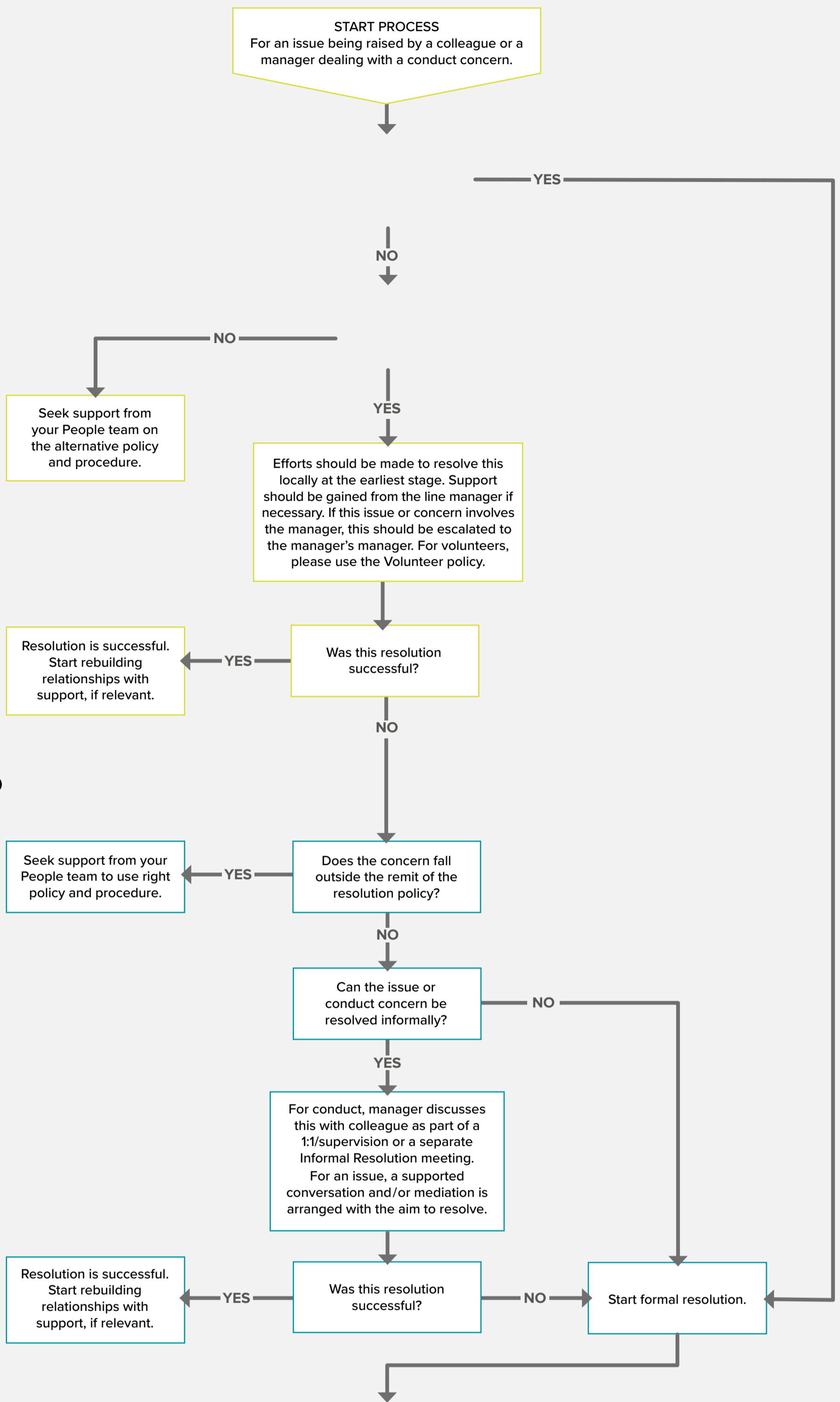


Process Map for the Resolution Policy



The Resolution Policy covers work-related concerns, disputes, problems (referred to as issues for the purposes of this policy) and concerns of a conduct nature. It would encompass anything formerly dealt with as a grievance, bullying and harassment and disciplinary matters.

To access further information, please move your mouse cursor onto the boxes with this symbol.



For full information on each stage please read the procedure document.